






2748D COPPER HEAD - DOUBLE COVER WATER JETTING



Water jetting applications

#											
	DN	size	mm	inch	mm	bar	psi	bar	psi	mm	kg/m
2748D-05V32/15	8	-05	7.8	5/16	21.8	2800	40,600	7000	101,500	230.0	0.99

APPLICATIONS

For very-high pressure lances for the construction and shipbuilding industries or for common industrial cleaning applications. Mainly used for hydrodemolition and removal of accumulated dirt and materials from surfaces such as concrete, asphalt and tanks.

FEATURES

- The hose benefits from an integral bonded second cover which is a different colour so the second cover acts as an early warning without having to take the hose out of service
- Polyurethane cover increases abrasion resistance
- The hose is lighter than one with a spiral guard or helix reinforced cover
- Smoother cover means the cover is less likely to be damaged
- Same great flexibility as a single covered hose of the same pressure
- Smaller OD when compared to the same spiral guarded or helix reinforced sleeved hose with a single cover
- Fully branded along the entire length of the hose with operating pressures
- Safety colours for different operating pressures

CONSTRUCTION


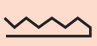


Core tube: Polyoxymethylene.
Pressure reinforcement: Six spiral layers of maximum tensile steel wire.
Cover: 1st: Polyamide; 2nd: Polyurethane, abrasion resistant.
Colour: 1st: Blue; 2nd: Orange.

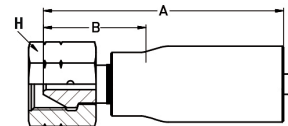
TEMPERATURE RANGE

-10°C up to +70°C.




FITTING

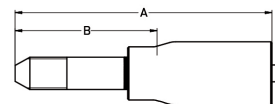
Type "M" female swivel: Nipple: very high strength stainless steel.
 Shell and nut: high strength carbon steel, zinc plated.

#						A	B			
	DN	size	mm	inch		mm	mm	mm	bar	psi
1AY2X-8-05	8	-05	7.9	5/16	3/4 - 16 UNF	91.0	38.0	27.0	3200	46,400
1AY2X-10-05	8	-05	7.9	5/16	7/8 - 14 UNF	91.0	38.0	30.0	3200	46,400
1AY2X-13-05	8	-05	7.9	5/16	1 1/8 - 11 UNF	91.0	38.0	36.0	3200	46,400



High pressure tube nipple UNF – LH thread: Nipple: very high strength stainless steel.
 Shell: high strength carbon steel, zinc plated.

#						A	B		
	DN	size	mm	inch		mm	mm	bar	psi
1Y42X-6-05	8	-05	7.9	5/16	3/8 - 24 UNF-LH	116.0	63.0	4000	58,000
1Y42X-9-05	8	-05	7.9	5/16	9/16 - 18 UNF-LH	116.0	63.0	4000	58,000



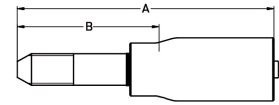
Please Note: Variety of fittings in mild steel or stainless steel available, other fittings available on request.
 We reserve the right to make technical changes without notice.



2748D COPPER HEAD - DOUBLE COVER WATER JETTING

High pressure tube nipple metric – LH thread: Nipple: very high strength stainless steel.
Shell: high strength carbon steel, zinc plated.

#	Ø				M14 x 1.5-LH	A	B	Pressure	
	DN	size	mm	inch				bar	psi
1YM2X-6-05	8	-05	7.9	5/16	M14 x 1.5-LH	116.0	63.0	4000	58,000



Polyflex Lok components

#	Description
1TM2X-8-05-HPK	Fitting for DN8 hoses incl. caps



Please Note: Variety of fittings in mild steel or stainless steel available, other fittings available on request.
We reserve the right to make technical changes without notice.