

# 2749D

## WATER JETTING



### Water jetting applications

#											
	DN	size	mm	inch	mm	bar	psi	bar	psi	mm	kg/m
2749D-03V34	5	-03	4.8	3/16	13.3	3010	43,645	7000	101,500	200.0	0.47
2749D-05V34	8	-05	7.8	5/16	17.3	3010	43,645	7000	101,500	230.0	0.83

### APPLICATIONS

For very-high pressure lances for the construction and shipbuilding industries or for common industrial cleaning applications. Mainly used for hydrodemolition and removal of accumulated dirt and materials from surfaces such as concrete, asphalt and tanks.

### FEATURES

- Meets or exceeds the requirements of DIN EN 1829-2. This standard prescribes that hose assemblies have to resist at least 20,000 impulse cycles amongst other challenges
- Available with quick connect Polyflex Lok System
- Compact lightweight hose
- Excellent flexibility

### CONSTRUCTION

**Core tube:** Polyoxymethylene.  
**Pressure reinforcement:** Six spiral layers of maximum tensile steel wire.  
**Cover:** Polyurethane.  
**Colour:** Red.

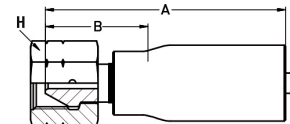
### TEMPERATURE RANGE

-10°C up to +70°C.

### FITTING

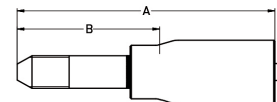
**Type "M" female swivel:** Nipple: very high strength stainless steel.  
 Shell and nut: high strength carbon steel, zinc plated.

#						A	B			
	DN	size	mm	inch	mm			mm	mm	bar
1AY2X-6-03	5	-03	4.8	3/16	9/16 - 18 UNF	91.0	38.0	22.0	4000	58,000
1AY2X-8-05	8	-05	7.9	5/16	3/4 - 16 UNF	91.0	38.0	27.0	3200	46,400
1AY2X-10-05	8	-05	7.9	5/16	7/8 - 14 UNF	91.0	38.0	30.0	3200	46,400
1AY2X-13-05	8	-05	7.9	5/16	1 1/8 - 11 UNF	91.0	38.0	36.0	3200	46,400



**High pressure tube nipple UNF – LH thread:** Nipple: very high strength stainless steel.  
 Shell: high strength carbon steel, zinc plated.

#						A	B		
	DN	size	mm	inch	mm			mm	bar
1Y42X-4-03	5	-03	4.8	3/16	1/4 - 28 UNF-LH	116.0	63.0	4000	58,000
1Y42X-6-03	5	-03	4.8	3/16	3/8 - 24 UNF-LH	108.0	58.0	4000	58,000
1Y42X-9-03	5	-03	4.8	3/16	9/16 - 18 UNF-LH	116.0	63.0	4000	58,000
1Y42X-6-05	8	-05	7.9	5/16	3/8 - 24 UNF-LH	116.0	63.0	4000	58,000
1Y42X-9-05	8	-05	7.9	5/16	9/16 - 18 UNF-LH	116.0	63.0	4000	58,000




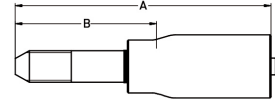
**Please Note:** Variety of fittings in mild steel or stainless steel available, other fittings available on request.  
 We reserve the right to make technical changes without notice.



# 2749D WATER JETTING

**High pressure tube nipple metric – LH thread:** Nipple: very high strength stainless steel.  
Shell: high strength carbon steel, zinc plated.

#						A	B		
	DN	size	mm	inch				mm	mm
1YM2X-6-03	5	-03	4.8	3/16	M14 x 1.5-LH	116.0	63.0	4000	58,000
1YM2X-6-05	8	-05	7.9	5/16	M14 x 1.5-LH	116.0	63.0	4000	58,000



## Polyflex Lok components

#	Description
1TM2X-8-03-HPK	Fitting for DN5 hoses incl. caps
1TM2X-8-05-HPK	Fitting for DN8 hoses incl. caps



**Please Note:** Variety of fittings in mild steel or stainless steel available, other fittings available on request.  
We reserve the right to make technical changes without notice.